



**BROWN**  
GEARTECH





## Who We Are

# The UK brand OEMs trust when failure isn't an option.

For over 50 years, Brown GearTech has powered the machines that keep Britain moving. From food processing and logistics to recycling and water treatment, our systems are built to last.

Founded on British engineering values, precision, reliability and accountability, we have evolved from a trusted component supplier into a strategic partner for mission-critical OEM projects.

Today, Brown GearTech represents a bold new chapter in industrial gearbox expertise. Our purpose is simple: to engineer gearbox and motor systems that never let you down.

**“WE DON'T JUST  
DELIVER PARTS.  
WE DELIVER  
CONFIDENCE”**

**– Nichola Adshead, Sales Director**







“BROWN  
GEARTECH IS  
BUILT FOR OEMS  
WHO NEED  
RELIABILITY  
TODAY AND  
INNOVATION  
FOR TOMORROW.”

– Frank Harris, Managing Director

## Why OEM's Choose Brown GearTech

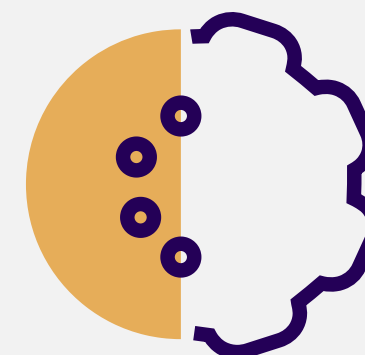
# More than a supplier. A partner in performance.

We understand the challenges OEMs face: tight deadlines, compliance pressures, and the need for guaranteed reliability at scale. That is why we do more than supply components, we collaborate.



### Complete system capability:

Gearbox, motor, control, and accessories integrated into one solution.



### Collaborative engineering:

Direct access to the engineers designing your solution.



### Proven reliability:

Decades of service in high-failure environments.



### Agile and independent:

UK-built, responsive, and accountable.



### Lifetime value:

Extended warranties\*, lifecycle support, and fast technical response.

\*Subject to Terms & Conditions.



## OEM Solutions Built for Resilience

# Engineered to perform. Built to last.

Every OEM project is unique. Our systems are tailored, not off-the-shelf.

### Capabilities

- Worm, helical, spiral bevel, and variable speed drives
- AC and DC geared motors with food-grade or corrosion-resistant options
- Gearbox co-design and CAD integration with OEM teams
- Rapid prototyping and in-house testing
- 5-year warranty options for long-term assurance

Whether it is a 24/7 quarry conveyor or a temperature-controlled logistics system, Brown GearTech drives are built to maximise uptime and reduce operational risk.

## Proven in the Field

# Trusted by leading OEMs across the UK.

We power thousands of machines every year in industries where downtime is not an option.

### Sectors

- Food processing & packaging – hygiene-ready stainless steel gearboxes
- Recycling & quarrying – rugged gearboxes built for shock, dust, and heavy loads
- Water & environmental systems – corrosion-resistant drives for continuous duty
- Logistics & transport – reliable performance at sub-zero temperatures





**Built for OEMs Who Can't Afford to Fail**

# Engineering partnerships, not purchase orders.

When you work with Brown GearTech, you are choosing a long-term strategic partner.

## Our Commitment

- Scalable supply to match demanding OEM production cycles
- Fast replacement turnaround and repair support
- Rigorous testing and ISO-accredited quality
- Rapid prototyping and in-house testing
- Lifecycle value through refurbishment and legacy support

**“IF EVERYONE WAS LIKE BROWN GEARTECH, THE INDUSTRY WOULD BE BETTER FOR IT. COMMUNICATION IS SUPERB, THEY ALWAYS MOVE WITH THE TIMES, AND THEY GO THE EXTRA MILE.”**

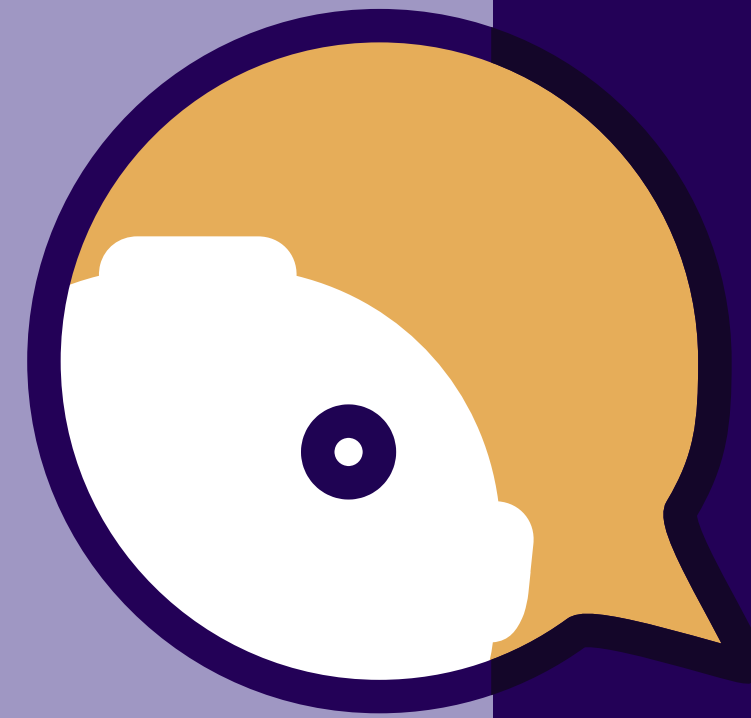
– Stewart Craham, Clark Door



**“THEY’RE RELIABLE, PROFESSIONAL, AND COLLABORATIVE, EVERYTHING YOU WANT IN A GEARBOX PARTNER.”**

– Andy Marsh, Bolton Gate Company





**Contact Us**

---

**Talk to our expert  
team today to  
secure your  
mission-critical  
gearbox solution.**

+44 (0)1634 201110

[sales@browngeartech.com](mailto:sales@browngeartech.com)

Victory House,  
Cleaming Wood Drive,  
Chatham, Kent, ME5 8RZ

